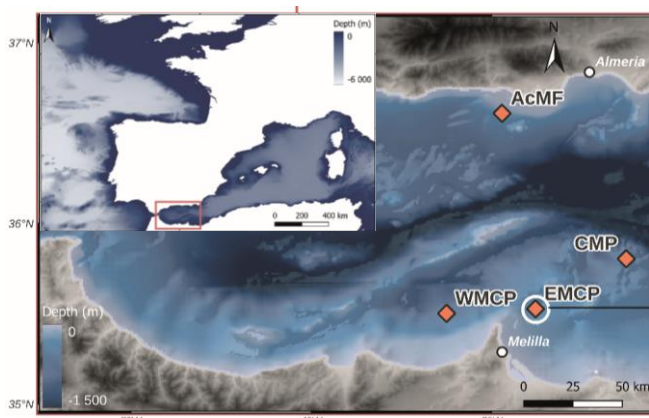
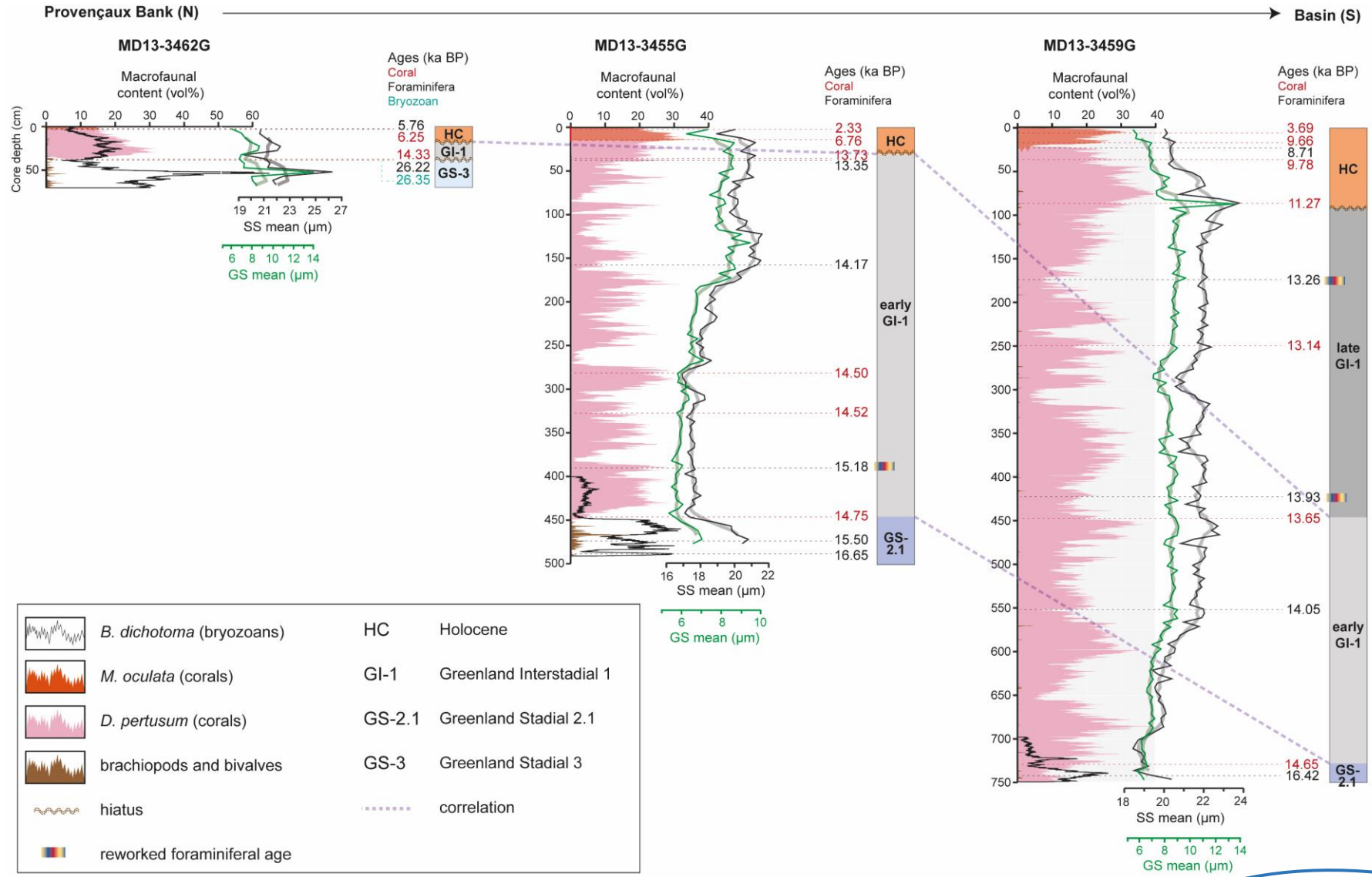
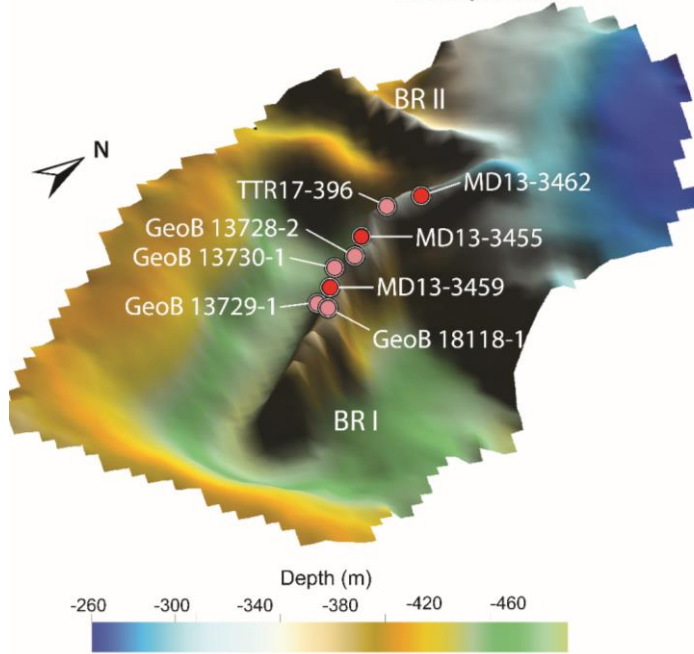


Staggered cold-water coral mound build-up on an Alboran ridge during the last deglacial

Fentimen et al. 2023 (<https://doi.org/10.1016/j.margeo.2023.106994>)



Provençaux Bank



- Mound build-up is heterogeneous and shows a staggered pattern along the ridge
- Local differences in current velocity and patchiness of substrate availability are suspected to drive this fluctuating mound aggradation